

# A Multihoming Based IPv4/IPv6 Transition Approach

Lizhong Xie, Jun Bi, and Jianping Wu

Network Research Center, Tsinghua University,  
China Education and Research Network (CERNET)  
Beijing 100084, China

**Abstract.** How to make IPv4 users utilize IPv6 applications is a typical scenario of the IPv4/IPv6 inter-operation. Nowadays, Tunnel Broker and 6to4 tunnel mechanisms are the popular solutions for this problem. This paper proposes a multihoming based algorithm MI46 to integrate Tunnel Broker and 6to4 tunnel mechanism. It overcomes the shortcomings of both Tunnel Broker and the 6to4 tunnel mechanism to form an optimized method to make the IPv4 users use the IPv6 applications.

**Keywords:** IPv4/IPv6 Transition, Multihoming, SHIM6.

## 1 Introduction

The Internet running IPv4 protocol [1] has gained huge success in the past 20 years. However, it has grown to a scale well beyond the designers envisioned over decades ago. In 1998, The IETF (Internet Engineer Task Force) introduced IPv6 protocol [2] which is designed to overcome the limitation of IP address and security problem. In recent years, a lot of countries (North America, Europe and East Asia) drive the development of the IPv6 protocol by constructing IPv6 operational network. Nowadays, more and more people have realized that it is inevitable to transit from IPv4 to IPv6.

Transition from IPv4 to IPv6 is a very complex problem, which involves the compatibility of the equipments, techniques, applications and so on. The IETF established a working group called “IPng Transition” (ngtrans) [3] to study these problems, and proposed plenty of transition methods. But, recently the IETF uses the ‘IPv6 Operations’ (v6ops) working group [4] and the new term “inter-operation” instead of the ngtrans working group and the term “transition”. The IETF believes that the transition from IPv4 to IPv6 is a long-term process and the inter-operation of the IPv4/IPv6 network is extremely necessary. So, the current main point is to study how to make the IPv4 and IPv6 network inter-operate well enough, rather than how to replace the IPv4 network with the IPv6 network.

Though the coexistence of IPv6 and IPv4 network will last a long time, the IPv6-only applications will be more and more popular when network application providers and application users realize that the IPv6 network is a definite trend. In this situation, it is very significant to study how to make the users in the IPv4 network use the IPv6-only applications, which is a typical scenario of the application inter-operation of the IPv4/IPv6 networks.

*Tunnel broker* [5] and *6to4 tunnel* [6] mechanism is the typical solutions to make the IPv4 users utilize IPv6 applications. This paper points out the pitfalls of these two solutions, and proposes a simplified-SHIM6 based mechanism MI46 which integrates Tunnel Broker and 6to4 tunnel solutions. In the MI46 mechanism, the dual-stack host in the IPv4 network holds both global IPv6 address and the 6to4 address. It uses the global IPv6 address and Tunnel Broker mechanism to visit the pure IPv6-host in the native IPv6 network, whereas it employs the 6to4 address and 6to4 tunnel mechanism to visit another dual-stack host in the IPv4 network via IPv6 protocol. In this way, we form a new optimized algorithm to make the IPv4 users use the IPv6 applications by integrating the advantages of Tunnel Broker and the 6to4 tunnel mechanisms.

The rest of the paper is organized as follows. Section 2 shows the problem statement; Section 3 presents the MI46 algorithm; In Section 4, the advantage of MI46 is introduced; and Section 5 concludes the paper.

## 2 Problem Statement

In this section, we first introduce Tunnel Broker and 6to4 tunnel mechanisms briefly, and then give a clear problem statement this paper focuses on by pointing out the pitfalls of Tunnel Broker and 6to4 tunnel mechanisms.

### 2.1 The Background of Tunnel Broker and 6to4 Tunnel

Tunnel broker is used to help users to manage the configured tunnels automatically. With the help of the tunnel broker, the dual-stack host in the IPv4 network can obtain the global permanent IPv6 address from the IPv6 ISP. Then, in order to form the IPv6 connectivity, an IPv6-in-IPv4 tunnel is set up between the dual-stack host and the IPv6-relay gateway, which is called tunnel server in Tunnel Broker mechanism. So, in Tunnel Broker mechanism, all traffic has to be forwarded by the IPv6-relay gateway.

The 6to4 tunnel is another automatic way to connect isolated IPv6 sites/hosts attached to an IPv4 network which has no native IPv6 support. An IPv6-relay gateway, which is called 6to4 Relay in the 6to4 tunnel mechanism, is provided for such IPv6 sites/hosts to visit IPv6 native network before they can obtain native IPv6 connectivity. With 6to4, the current IPv4 network is treated as the link layer, and the existing IPv4 routing infrastructure is utilized to forward IPv6-in-IPv4 encapsulated packet. The 6to4-host uses a 6to4 IPv6 address (2002:IPv4 Address:: /80) as the communication identifier. When the IPv6 packet is sent, the IPv4 address of tunnel end point can be found within the 6to4 address, and then a tunnel is formed without explicit configuration.

### 2.2 Problem Statement

How to make the IPv4 users use the IPv6 applications is a typical scenario of the application inter-operation of IPv4/IPv6 network. When a dual-stack host in the IPv4 network wants to use the IPv6 applications, the following two scenarios are possible:

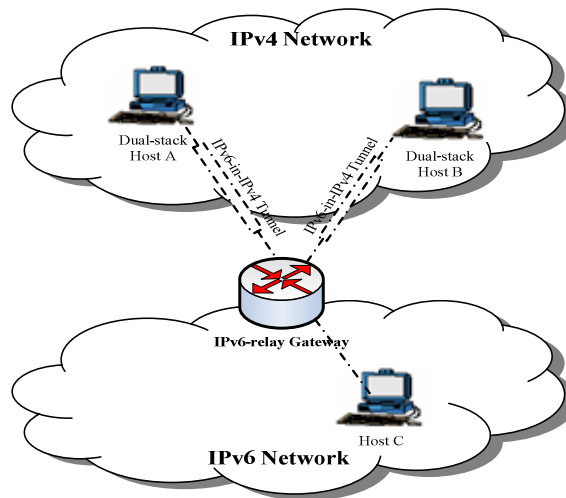
- (1) Scenario 1: The dual-stack host in the IPv4 network visits the pure IPv6-host in the native IPv6 network. With the deployment of the IPv6, a lot of IPv6

applications will be located at the native IPv6 network. The dual-stack host in the IPv4 network must visit the pure IPv6-host/server in the native IPv6 network if it wants to use these IPv6 applications.

- (2) Scenario 2: Two or more dual-stack hosts in the IPv4 network communicate with each other using the IPv6 protocol in order to use the IPv6-only applications. In the future, many IPv6 applications will have no IPv4 support. Therefore, the dual-stack hosts in the IPv4 network must communicate with each other using the IPv6 protocol if they want to use the IPv6-only applications.

As mentioned above, Tunnel Broker and the 6to4 tunnel mechanisms are the typical solutions to make the IPv4 users use the IPv6 applications. However, each of these two solutions can not be applied to both the above scenarios appropriately.

Tunnel Broker can work well in the scenario 1, but when it works in the scenario 2 (Fig.1), the traffic between the two dual-stack hosts must be forwarded by the IPv6-relay gateway. So, the IPv6-relay gateway may potentially become the communication bottleneck. Besides, a packet from one dual-stack host to another must be encapsulated and dencapsulated twice. The first time encapsulation/ dencapsulation occurs between the sender and the IPv6-relay gateway and the second time encapsulation/ dencapsulation occurs between the IPv6-relay gateway and the receiver. This behavior may lead to bad user experience.



**Fig. 1.** Scenario that IPv4 users use IPv6 applications by tunnel broker

In Figure 1, the dual-stack hosts A、 B in the IPv4 network and the host C in the IPv6 network all run the IPv6 applications. The dual-stack host A and B obtain the global IPv6 addresses from the IPv6 ISP. When the host A communicates with the host C, there is no doubt that the traffic need to be forwarded by the IPv6-relay gateway. However, when the host A communicates with the host B, the traffic still need to be forwarded by the IPv6-relay gateway, which increases the burden of the

IPv6-relay gateway unnecessarily. Apparently, it is a better way that the host A communicates with B via a direct tunnel. That is just the behavior of the 6to4 tunnel mechanism.

The 6to4 tunnel mechanism can work well in the scenario 2 since there is no need to employ a relay gateway to forward the traffic between the dual-stack hosts. However, because of the special format of 6to4 address, it's hard to do routing aggregation for 6to4 address. Hence, the 6to4 tunnel mechanism is not very suitable as a common approach for IPv6 communication. So, it is not a good method in scenario 1.

In summary, Tunnel Broker can work better in scenario 1 than in scenario 2, while the 6to4 tunnel mechanism is more suitable in scenario 2 than in scenario 1. So, one interesting problem is how to integrate these two mechanisms and form an optimized solution. That is just the topic we discuss next.

### 3 The MI46 Algorithm

In this paper, we present a simplified-SHIM6 based algorithm MI46 to integrate Tunnel Broker and the 6to4 tunnel mechanisms. We believe that this integration can form an optimized IPv4/6 transition approach.

#### 3.1 The Background of SHIM6

Currently, the SHIM6 mechanism [7] is the most promising multihoming approach in the IETF's viewpoint. *Multihoming* refers to the phenomena that one network end node accesses to the Internet through multiple network paths mainly due to the consideration of fault resilience. For the purpose of access to the Internet via multiple network paths, the multihomed network end node often possesses several addresses. Once the current network path fails, the multihomed network end node can immediately switch to another address and use another network path to communicate. Therefore, as a technical solution of multihoming, SHIM6 has dealt with the problem of address switch, which is just the key problem of the MI46 algorithm.

In the SHIM6 approach, a new 'SHIM6' sub-layer is inserted into the IP stack in end hosts that wish to take advantage of multihoming (Figure 2). The SHIM6 sub-layer is located within the IP layer between the IP endpoint sub-layer and IP routing sub-layer. With the SHIM6, hosts have to deploy multiple provider-assigned IP address prefixes from multiple ISPs. These IP addresses are used by applications and if a session becomes inoperational, SHIM6 sub-layer can switch to use a different address pair. The switch is transparent to applications as the SHIM6 layer rewrites and restores the addresses at the sending and receiving host.

For the purpose of transport-layer communication survivability, the SHIM6 approach separates the identity and location functions for IPv6 addresses. In SHIM6, the identifier is used to uniquely identify endpoints in the Internet, while the locator is used to perform the role of routing. There is a one-to-more relationship between the identifier and locator. The SHIM6 layer performs the mapping function between the identifier and the locator consistently at the sender and the receiver. The upper layers above the SHIM6 sub-layer just use the unique identifier to identify the

communication peer, even though the locator of the peer has changed. Hence, when the multihomed host switches to another locator, the current transport layer communication does not break up since the identifier is not changed.

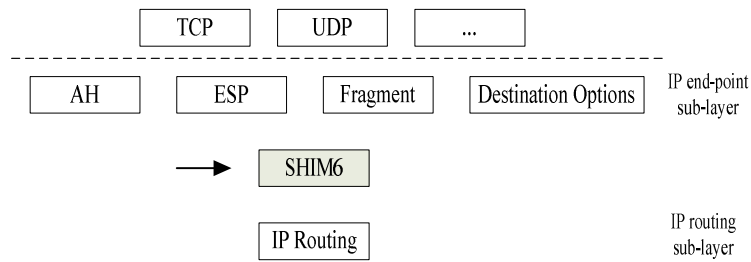


Fig. 2. SHIM6 Architecture

### 3.2 The MI46 Algorithm

In the MI46 algorithm, for the purpose of integrating Tunnel Broker and the 6to4 tunnel mechanisms, we construct a virtual IPv6 network for upper-layer IPv6 applications by inserting a SHIM6 sub-layer in the IPv6 stack of the dual-stack host within the IPv4 network. The SHIM6 sub-layer distinguishes that the peer is located in the IPv4 or IPv6 network, and selects the 6to4 tunnel or Tunnel Broker mechanism to communicate. The architecture of the MI46 mechanism is shown in Figure 3.

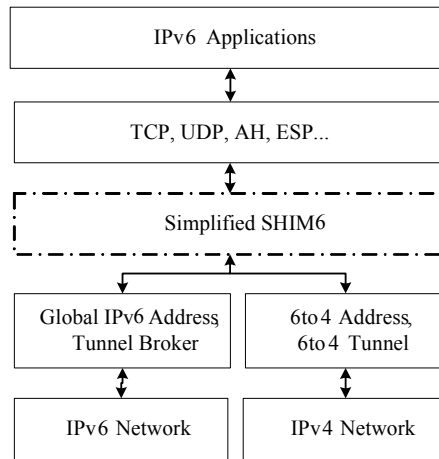


Fig. 3. MI46 Architecture

In the MI46 mechanism, the dual-stack host in the IPv4 network need hold both the global IPv6 address and the 6to4 address. We choose the global IPv6 address as the primary address since it is hard to do aggregation for 6to4 address. The global IPv6 address is assigned by the IPv6 ISP, while the 6to4 address is generated by the

dual-host itself. Applications and transport layer, which are above the SHIM6 sub-layer, just use the global IPv6 address as its identifier. And the IP layer, which is below the SHIM6 sub-layer, uses the global IPv6 address or 6to4 address as the locator.

When a dual-stack host that has deployed the MI46 mechanism in the IPv4 network initially contacts with another IPv6 host (a dual-stack host in the IPv4 network or a host in the native IPv6 network), it uses the global IPv6 address and Tunnel Broker mechanism. In succession, the dual-stack host sends a probe message to examine the correspondent whether or not supports the MI46 mechanism. If the correspondent deploys the MI46 mechanism, it will return a response message to the initiator. Then, they exchange their respective 6to4 address through two handshakes. The whole process of the four handshakes is shown in Figure 4. The algorithms of four handshakes in the initiator and correspondent are shown in Figure 5.

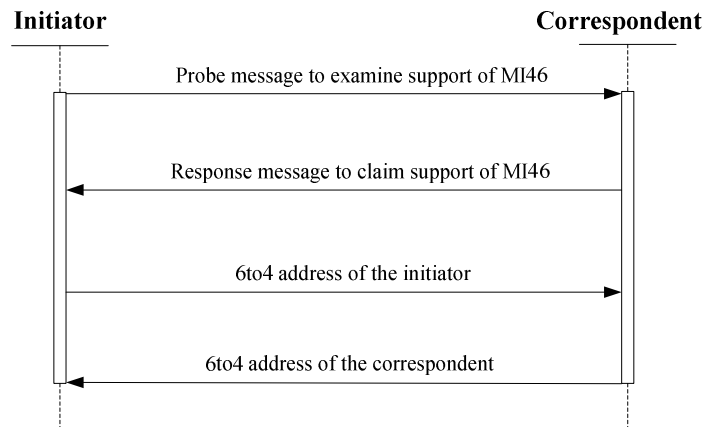


Fig. 4. Four handshakes process

If the four handshakes complete, the initiator can deduce that the correspondent is also in the IPv4 network. They both establish the mapping state between the peer’s global IPv6 address (identifier) and the 6to4 address (locator). Then all the subsequent traffic between the initiator and the correspondent change the locators from the global IPv6 addresses to the 6to4 addresses. But the identifiers used by upper layer keep consistent due to the mapping function of the MI46 sub-layer. That guarantees the transport layer communications are not terminated. Now, all traffic goes through the direct 6to4 tunnel (Figure 6).

After the dual-stack host in the IPv4 network completes current communication with the correspondent, they both keep the mapping state of the peer’s global IPv6 address and the 6to4 address for a while. Next time when they communicate with each other, they can look up the mapping state directly and use the 6to4 address as both the identifier and the locator. In this situation, the mapping function of the SHIM6 is turned off automatically to improve the packet handling performance. The expired mapping states are deleted by the garbage collecting system.

---

**Four\_Handshakes():** in Initiator

---

```

1: SendProbeMsg()
2: if (!RcvResponseMsg()) then
3:   do
4:     if(ProbeMsgTimeout(probeMsgTimer)) then
5:       RetransmitProbeMsg();
6:       probeRetransTimes ++;
7:       probeMsgTimer = probeMsgTimer*2 ;
8:     end if
9:   while( probeRetransTimes <= MAX_PROBE_RETRANS_TIMES )
10: else if (RcvResponseMsg()) then
11:   Send6to4Addr(local6to4Addr);
12: if (!RcvPeer6to4Addr()) then
13:   do
14:     if(6to4AddrTimeout(6to4AddrTimer)) then
15:       Retransmit6to4Addr(local6to4Addr);
16:       6to4AddrRetransTimes ++;
17:       6to4AddrTimer = 6to4AddrTimer*2 ;
18:     end if
19:   while( 6to4AddrRetransTimes <= MAX_6TO4_RETRANS_TIME )
20: else if(RcvPeer6to4Addr()) then
21:   CreateAddrMapping( globalAddr, 6to4Addr);
22: end if
22: end if

```

---

a. The algorithm of four handshakes in the initiator

---

**Four\_Handshakes():** in Correspondent

---

```

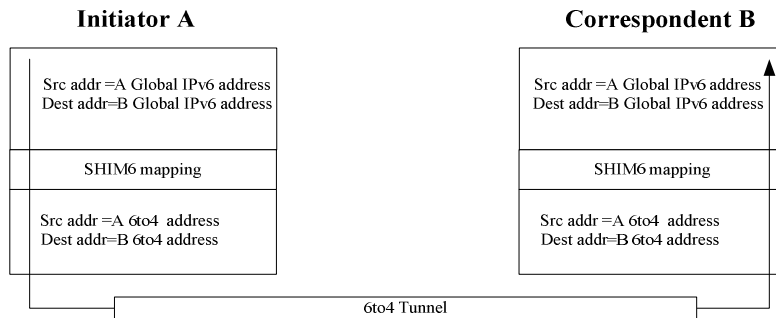
1: if (RcvProbeMsg()) then
2:   SendResponseMsg();
3: end if
4: if(RcvPeer6to4Addr() and ProbeMsgHasReceived()) then
5:   Send6to4Addr(local6to4Addr);
6:   CreateAddrMapping( globalAddr, 6to4Addr);
7: end if

```

---

b. The algorithm of four handshakes in the correspondent

**Fig. 5.** The algorithms of four handshakes in the initiator and correspondent



**Fig. 6.** The communication process between two dual-stack hosts by MI46

If the dual-stack host in the IPv4 network visits the pure IPv6-host in the native IPv6 network, the second handshake of the four handshakes will not complete since it's unnecessary to support the MI46 mechanism for the hosts in the native IPv6 network. Thus, the whole communication uses the global IPv6 address and Tunnel Broker mechanism.

### 3.3 The Simplification of SHIM6

The section above has explained in details how SHIM6 integrates Tunnel Broker and 6to4 tunnel mechanisms to form a new IPv4/IPv6 transition approach. This section will explain why we simplify the SHIM6 mechanism.

The SHIM6 is a solution of multihoming, whose main goal is fault resilience. That is, it can seamlessly switch to another network path when the current one fails. The goal of MI46 is to integrate Tunnel Broker and the 6to4 tunnel mechanisms to form an optimized method to make the IPv4 users use the IPv6 applications. The different goals of the SHIM6 and MI46 determine that it is not necessary for the MI46 to use the all functions of the SHIM6. Thus, we need a simplified SHIM6.

What the MI46 needs is just the address mapping function, the address switch function and the function of exchanging address list between the hosts. Other functions, essential for the SHIM6, are not needed for the MI46. For example, SHIM6 needs to detect failures between two communicating hosts continually and explore the reachability of another pair of addresses between the same hosts if a failure occurs and an operational pair can be found. This function is not necessary for MI46 since it doesn't deal with the fault resilience.

## 4 The Advantage of the MI46 Algorithm

As we mentioned above, Tunnel Broker and the 6to4 tunnel are the popular solutions to make the IPv4 users use the IPv6 applications. Tunnel Broker mechanism is very suitable for the scenario that the IPv4 hosts visit the hosts in the IPv6 network. But when it works in the situation that two dual-stack hosts use IPv6 protocol to communicate, it may make the burden of IPv6-relay gateway heavier and make it become the potential communication bottleneck; meanwhile, it brings bad user experience due to encapsulation and decapsulation twice. The 6to4 tunnel mechanism establishes the direct tunnel using the 6to4 addresses when two dual-stack hosts in the IPv4 network communicate with each other, so it's a good approach in this scenario. But because the 6to4 address is a kind of special format address, it is hard to do aggregation and leads to the fact that routing system works in an uncomfortable way. Hence, 6to4 address is not preferred for common IPv6 communication like the situation that IPv4 hosts visit the native IPv6 network.

The MI46 integrates Tunnel Broker and the 6to4 tunnel mechanisms well, which looks transparent for the applications and the upper layers. When the dual-stack host in the IPv4 network visits the pure IPv6-hosts in the native IPv6 network, the whole communication uses the global IPv6 address and Tunnel Broker mechanism. When two dual-stack hosts communicate with each other, they seamlessly switch to 6to4 addresses and use the direct 6to4 tunnel. Figure 7 shows how the MI46 works well in above two scenarios.



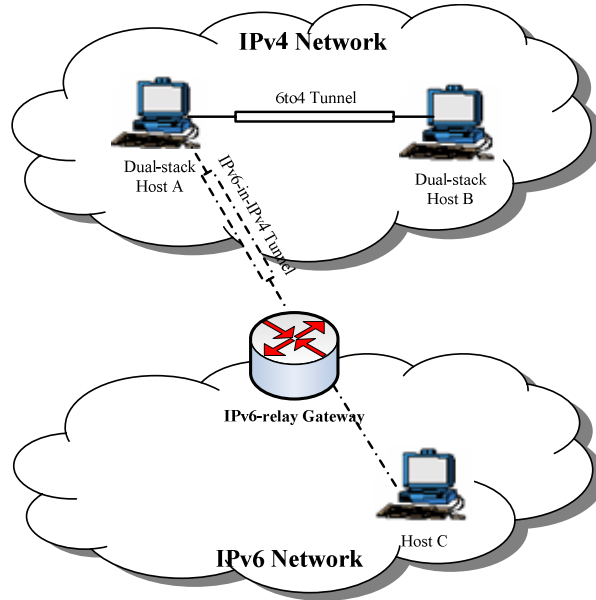


Fig. 7. Scenario that IPv4 users use IPv6 applications by MI46

In Figure 7, the dual-stack host A in the IPv4 network communicates with the host C in the IPv6 network using the global IPv6 address and Tunnel Broker mechanism. When A communicates with the dual-stack host B in the IPv4 network, they seamlessly switch to the 6to4 addresses and use the direct 6to4 tunnel to communicate.

With the MI46 algorithm, when two or more dual-stack hosts communicate with each other, the burden of the IPv6-relay gateways can be reduced effectively. And it is expected that users will get better experience with the direct 6to4 tunnel instead of IPv6-relay gateway’s forward. Since we use the global IPv6 addresses in the situation that the dual-stack host visits the native IPv6 network, the problem that the 6to4 address is hard to aggregate can be avoided. The comparison of Tunnel Broker、6to4 tunnel and MI46 is shown in the table 1.

Table 1. Comparison of Tunnel Broker、6to4 tunnel and MI46

	Dual-stack hosts in IPv4 network visit the pure-IPv6 host in the native IPv6 network	Dual-stack hosts in the IPv4 network communicate with each other using IPv6 protocol
Tunnel Broker	Very suitable.	Unsuitable. The burden of the IPv6-relay gateway is heavy and the user experience is bad.
6to4 Tunnel	Unsuitable. 6to4 address is hard to do aggregation.	Very suitable.
MI46	Very suitable.	Very suitable.

## 5 Conclusions

In this paper, we propose a simplified-SHIM6 based algorithm MI46 which integrates Tunnel Broker and the 6to4 tunnel mechanisms to form an optimized method to make the IPv4 users use the IPv6 applications. With the MI46 algorithm, we can overcome the shortcoming of the 6to4 tunnel mechanism, that is, the 6to4 address is hard to do aggregation when it is used as a common method to visit the IPv6 network. Meanwhile, we improve Tunnel Broker mechanism. In the situation that two or more dual-stack hosts communicate with each other, the MI46 algorithm can reduce the burden of the IPv6-relay gateways effectively, and the users can get better experience. Therefore, we conclude that the MI46 is a better solution to make the IPv4 users use the IPv6 applications than Tunnel Broker and the 6to4 tunnel mechanisms.

## References

1. Postel, J.: INTERNET PROTOCOL, RFC 0791, September, 1981
2. Deering, S. and Hinden, R.: Internet Protocol Version 6 (IPv6) Specification, RFC 2460, December, 1998
3. IETF Next Generation Transition (ngtrans) Working Group, <http://www.ietf.org/html.charters/OLD/ngtrans-charter.html>
4. IETF IPv6 Operations (v6ops) Working Group, <http://www.ietf.org/html.charters/v6ops-charter.html>
5. Durand, A., Fasano, P. and Lento, D.: IPv6 Tunnel Broker, RFC 3053, Jan. 2001
6. Carpenter, B. and Moore, K.: Connection of IPv6 Domains via IPv4 Clouds, RFC 3056, February 2001
7. Nordmark, E. and Bagnulo, M.: Level 3 multihoming shim protocol, draft-ietf-shim6-proto-07.txt, November 2006